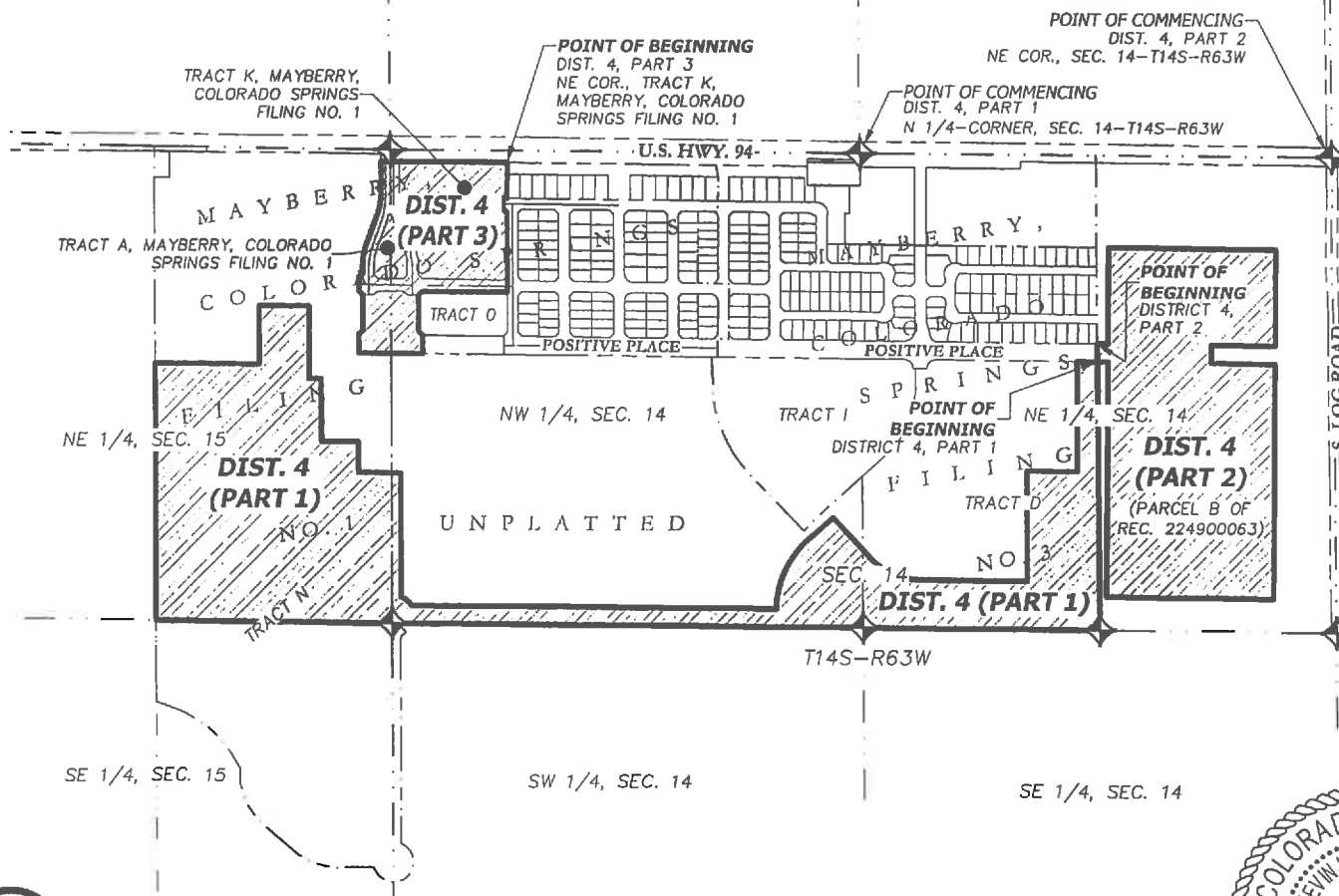


# EXHIBIT

Inclusion to Mayberry, Colorado Springs Metropolitan District No. 4  
 Located in the North Half of Section 14 and the East Half of the Northeast Quarter of Section 15,  
 Township 14 South, Range 63 West of the 6th Principal Meridian  
 County of El Paso (Unincorporated), State of Colorado

MAP (See Sheets 1 through 5 for Descriptions)



R&R ENGINEERS-SURVEYORS, INC.  
 1635 W. 13TH AVENUE, SUITE 310  
 DENVER, COLORADO 80204  
 303-753-6730  
 www.rrengineers.com



EXHIBIT - Mayberry, Metropolitan District No. 4 INCLUSION	Orig. Issue Date: 12/28/2025	Sheet 6
	Drawn By: DD	of 6
	Checked By: JS	
	Project No. MC25037	6
REVISIONS		



Kevin J. Kucharczyk, P.L.S.  
 Colorado Reg. No. 34591  
 For and on behalf of  
 R&R Engineers-Surveyors, Inc.

**NOTE**  
 THIS MAP IS TO DEPICT THE ACCOMPANYING  
 DESCRIPTION AND IS FOR INFORMATIONAL  
 PURPOSES ONLY. IT DOES NOT REPRESENT A  
 MONUMENTED LAND SURVEY.

