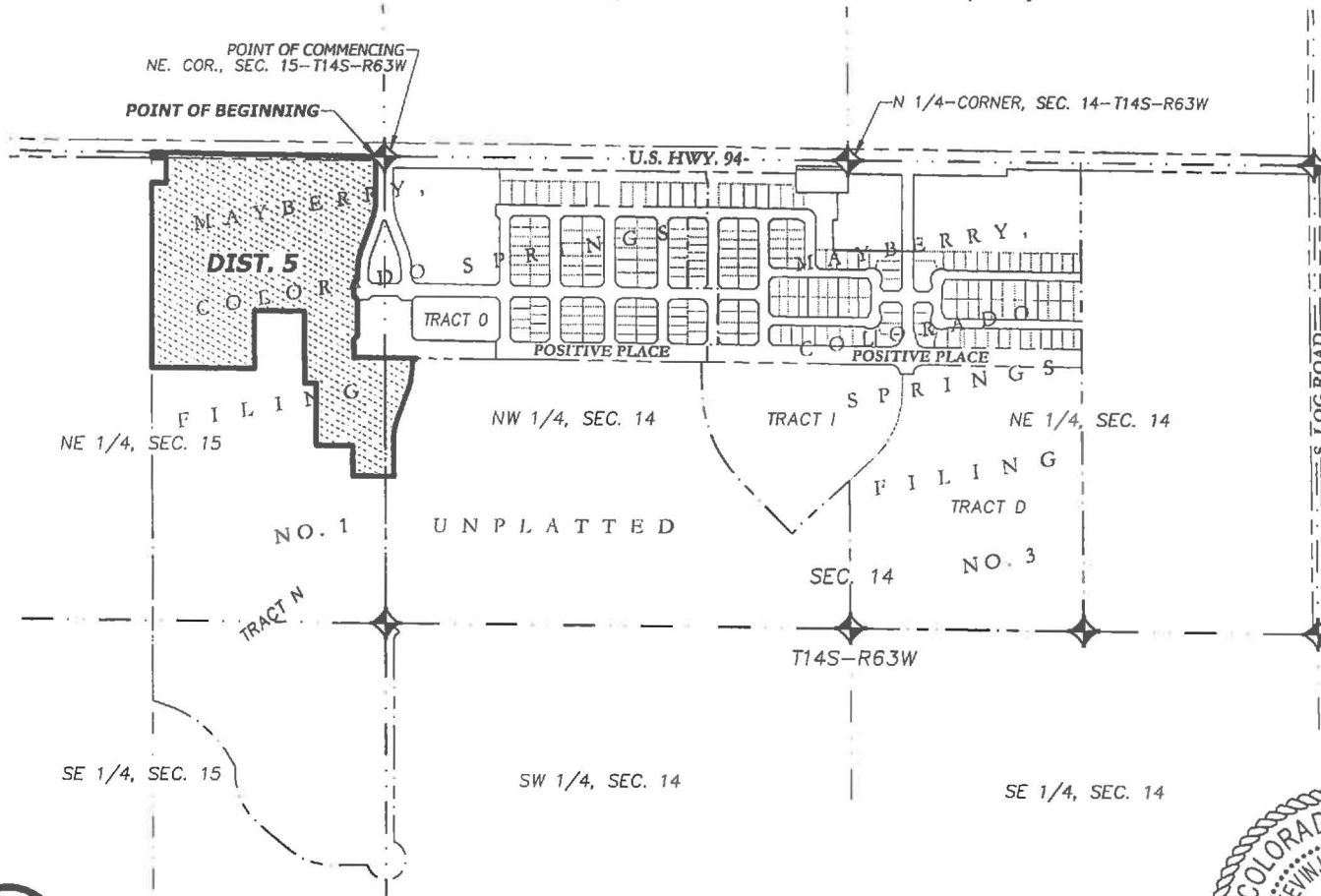


EXHIBIT

Inclusion to Mayberry, Colorado Springs Metropolitan District No. 5
 Located in the Northwest Quarter of Section 14 and the East Half of the Northeast Quarter of Section 15,
 Township 14 South, Range 63 West of the 6th Principal Meridian
 County of El Paso (Unincorporated), State of Colorado

MAP (See Sheets 1 and 2 for Description)



NOTE

THIS MAP IS TO DEPICT THE ACCOMPANYING DESCRIPTION AND IS FOR INFORMATIONAL PURPOSES ONLY. IT DOES NOT REPRESENT A MONUMENTED LAND SURVEY.



Kevin J. Kucharczyk, P.L.S.
 Colorado Reg. No. 34591
 For and on behalf of
 R&R Engineers-Surveyors, Inc.

R&R ENGINEERS-SURVEYORS, INC.
 1635 W. 13TH AVENUE, SUITE 310
 DENVER, COLORADO 80204
 303-753-6730
 www.rrengineers.com



| | | | | |
|---|-------------------|-----------|-------|---|
| EXHIBIT - Mayberry, Metropolitan District No. 5 INCLUSION | Orig. Issue Date: | 2/28/2025 | Sheet | 3 |
| | Drawn By: | DD | of | 3 |
| | Checked By: | JS | | |
| | Project No. | MC25037 | | |

REVISIONS

